



Agilent 8850 GC Firmware

## Release Notes – Revision 3.0.3.21

# Notices

## Copyright

© Agilent Technologies, Inc. 2024

No part of this manual may be reproduced in any form or by any means (including electronic storage and retrieval or translation into a foreign language) without prior agreement and written consent from Agilent Technologies, Inc. as governed by United States and international copyright laws.

### Agilent Technologies, Inc.

5301 Stevens Creek Blvd.  
Santa Clara, CA 95051  
USA

## Firmware/Software Revision

This guide is valid for the 3.0.3.21  
revision of *Agilent 8850GC Firmware*

## Warranty

The material contained in this document is provided "as is," and is subject to being changed, without notice, in future editions. Further, to the maximum extent permitted by applicable law, Agilent disclaims all warranties, either express or implied, with regard to this manual and any information contained herein, including but not limited to the implied warranties of merchantability and fitness for a particular purpose. Agilent shall not be liable for errors or for incidental or consequential damages in connection with the furnishing, use, or performance of this document or of any information contained herein. Should Agilent and the user have a separate written agreement with warranty terms covering the material in this document that conflict with these terms, the warranty terms in the separate agreement shall control.

## Technology Licenses

The hardware and/or software described in this document are furnished under a license and may be used or copied only in accordance with the terms of such license.

## Safety Notices

### CAUTION

A **CAUTION** notice denotes a hazard. It calls attention to an operating procedure, practice, or the like that, if not correctly performed or adhered to, could result in damage to the product or loss of important data. Do not proceed beyond a **CAUTION** notice until the indicated conditions are fully understood and met.

### WARNING

A **WARNING** notice denotes a hazard. It calls attention to an operating procedure, practice, or the like that, if not correctly performed or adhered to, could result in personal injury or death. Do not proceed beyond a **WARNING** notice until the indicated conditions are fully understood and met.



# Table of Contents

1	Document History	4
2	Introduction	5
3	Compatibility	6
4	Support Information	7
5	Agilent 8850 GC Firmware – What’s new?	8
6	Resolved Issues in revision 3.0.3.21	9
7	Firmware Update Program	10



# 1 Document History

The table below lists all changes that have been made to this document.

Date	Version	Description
6th Feb 2025	Rev 1.00	Initial release.

## 2

## Introduction

The purpose of this document is to provide users of the Agilent [8850 Gas Chromatograph](#) guidance to relevant support documentation that contains further levels of information and detail

**Table 1** Terms and abbreviations used in this document

Terms	Description
SSB	Software Status Bulletin
CDS	Chromatographic Data System
U	Update
SP	Service Pack
HF	Hotfix
SR	Service Release
[xx]	Final Build Numbers of a released product
DSA	Data System Adapter

# 3

## Compatibility

### Supported Agilent Data Systems

OpenLab CDS (2.8, 2.7, 2.6, 2.5)

OpenLab CDS ChemStation Edition (C.01.11 LTS, C.01.10, C.01.09 )

GC/MS MassHunter Acquisition (13.0)

OpenLab CDS EZChrom Edition (A.4.10 Update 3.)

### Supported Agilent GC Driver

Agilent GC Driver (4.2 or higher.)

## 4

## Support Information

- Agilent recommends using always the latest firmware revision of a firmware in order to avoid interoperability issues.
- Generally, Agilent recommends keeping the GC instrument firmware always current.

### **Notes for Agilent 8850 controlled by non-Agilent Chromatography Data Systems (CDS)**

- The 3rd-party CDS software vendor is responsible for compatibility testing with the respective CDS revision.
- The 3rd-party CDS software vendor defines the minimum firmware revision required for CDS compatibility.
- The 3rd-party CDS release notes issued by the respective CDS vendor may use different terminology for the firmware requirements such as "tested firmware", "supported firmware", "firmware requirements", "minimum tested firmware", etc.

### **OQ/PV - Validation Information**

If a firmware upgrade has been performed, normally no revalidation of the module/system is required. This is also stated in the released Service Note applicable to the release.



## 5

# Agilent 8850 GC Firmware – What's new?

### **What's new in 8850 GC Firmware 3.0.3.21?**

The 3.0 release of the 8850 firmware is the first production release for 8850 GCs shipped to customers.

## 6

## Resolved Issues in revision 3.0.3.21

**The current firmware for the 8850A is 3.0.3.21** (Released 6<sup>th</sup> Feb 2025)

[https://download.chem.agilent.com/firmware/8850\\_FW\\_3.0.3.21.tgz.gpg](https://download.chem.agilent.com/firmware/8850_FW_3.0.3.21.tgz.gpg)

To install this version, use GC Firmware Update Utility 3.0.1.0 or greater.

Issue Id	SSB Problem Description Title
046366	GC system fault-Fault code, 0x00000200, Error code, 1000600a, sequence abort
046425	PP Inlet - post run defect in flow control mode
046522	GC Fault 1000600a//0x00000200 with FW 2.8
046544	H2 Sensor appears to be zeroing after each run. Adding time to the GC Cycle time.
046579	Waters: They report a need for 500 mL flow rate.
046586	Latest VICI actuator requires GC FW changes to pass EFT.
046595	8850 Channel Partner and AIB detector configuration support.
046597	Allow AIB compatibility with the 8850.
046606	Phone Browser UI Stuck on Loading Wheel Upon Startup.
046607	H2 Sensor giving error messages reporting "Hydrogen Sensor: Not Functioning" and "Hydrogen Sensor: Invalid Environment".
046633	Can't Download Diagnostic Data Collection CSV file.
046716	Phone UI: Instrument firmware revision is empty.
046717	Phone UI: Attempting to change language does not bring up language selection menu.

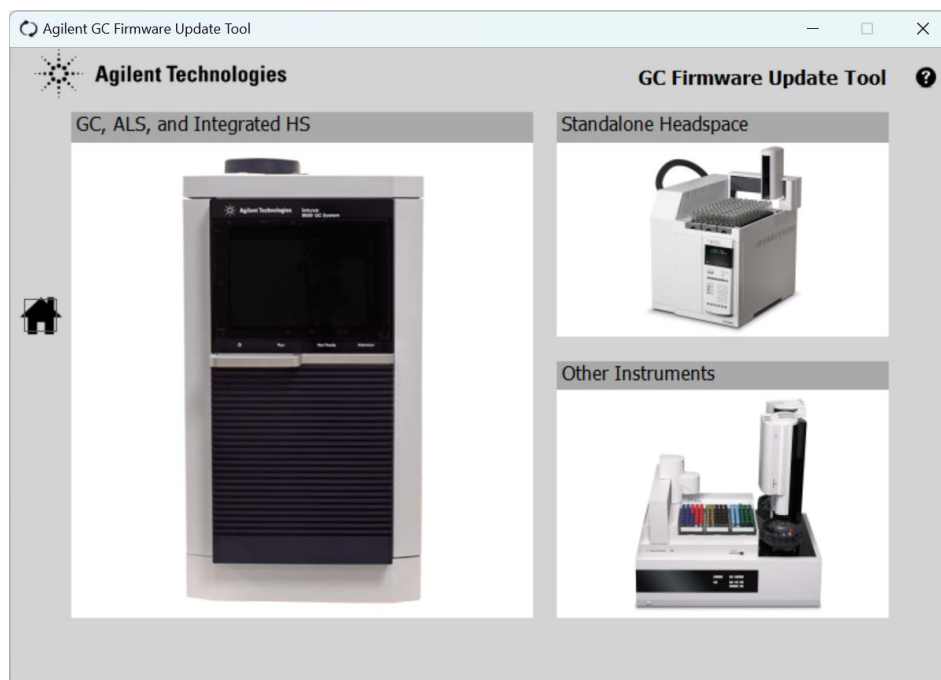
## 7

# Firmware Update Program

The GC firmware update program is supplied as part of the Firmware Update Package.

Always use the latest version of the update tool. The current FW update Utility is 3.0.1.0

After the program has been installed and executed the following screen appears.

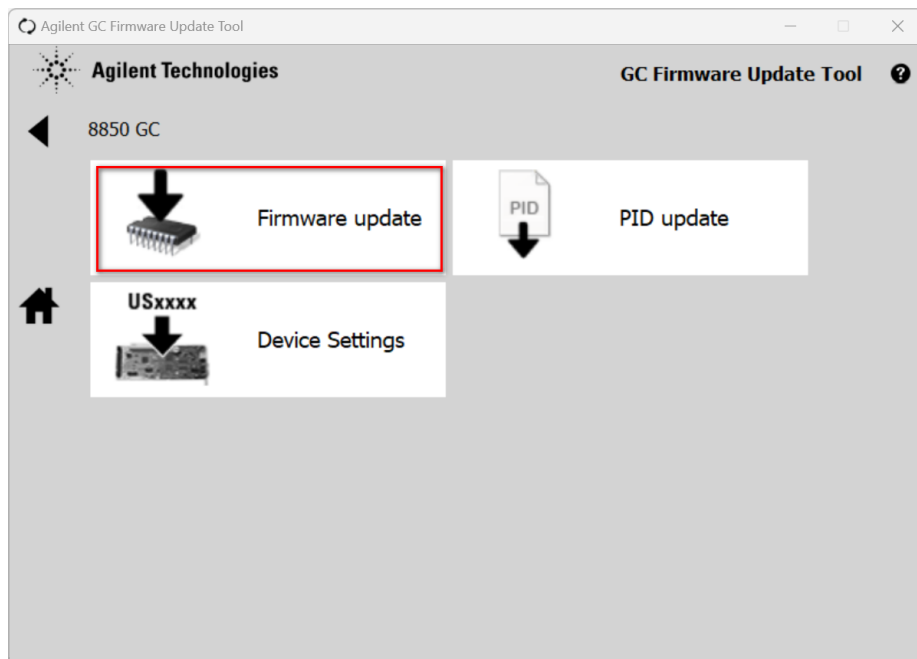


This enables the user to select which instrument type needs to have its firmware downloaded. Select the **GC and ALS**.

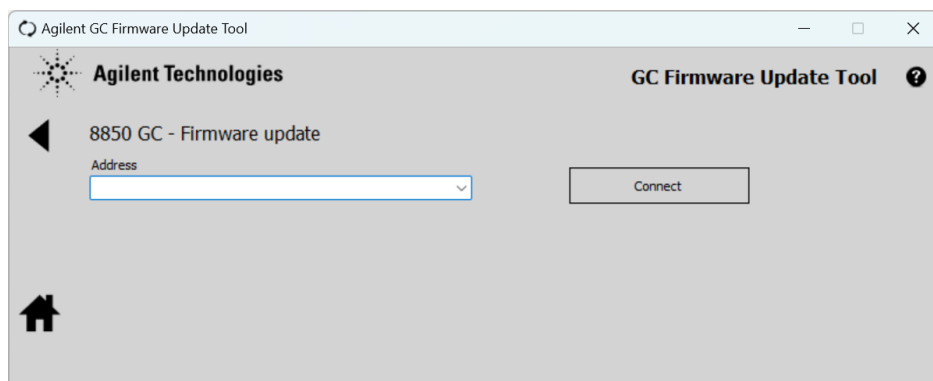


Choose the **8850 GC** from the Product menu.

The next screen allows us to either modify firmware or PID values for the EPC modules.

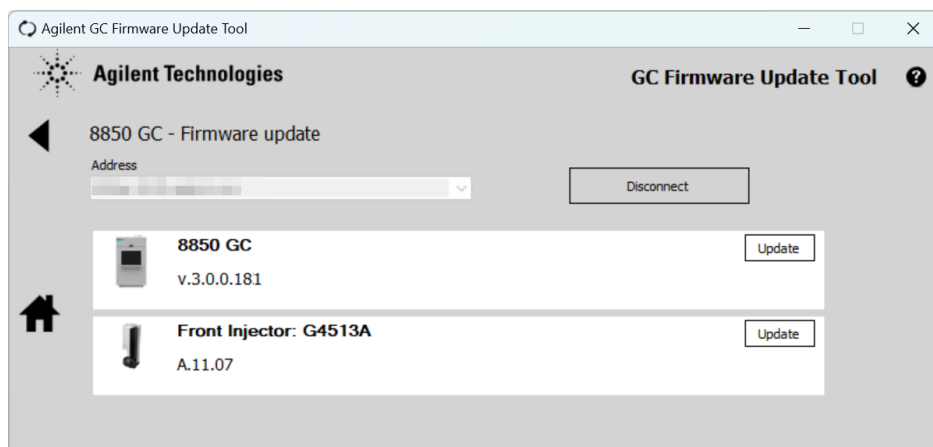


Select **Firmware update**.



After choosing to update firmware, you must then enter the **IP address** or **host name** of the 8850 that you wish to connect to and then select **Connect**.

Information such as current installed firmware will then be displayed.





Select **Update**.

Selects **Accept and Install**.

A Windows Explorer directory will then appear and you must select the firmware revision that needs to be downloaded. If the required firmware version is not displayed then you can "browse" your harddrive to find it.

The firmware file has the structure 8850\_FW\_X.X.X.tgz.gpg

Name					Status	Date modified	Type	Size
 8850_FW_3.0.0.181.tgz.gpg						8/29/2024 4:08 PM	GPG File	1,318,269 KB

After you have selected the correct file the firmware will automatically be downloaded to the GC and installed.

After the installation is done the GC will reboot and the firmware update is complete.

[www.agilent.com](http://www.agilent.com)

© Agilent Technologies, Inc. 2024

D0127264